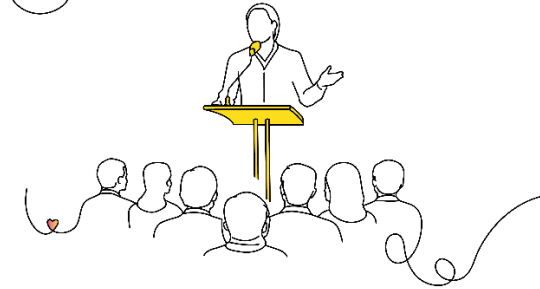
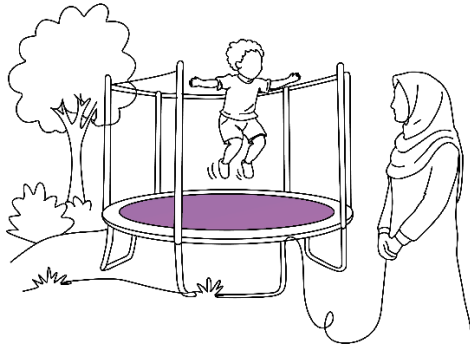




Families caring for disabled and seriously ill children face systemic disadvantage. Suitable support is often limited and hard to access. Families can experience financial strain, stress and isolation, while children miss out on the learning and fun that every child deserves. We make life better for families by...



WE EMBRACE

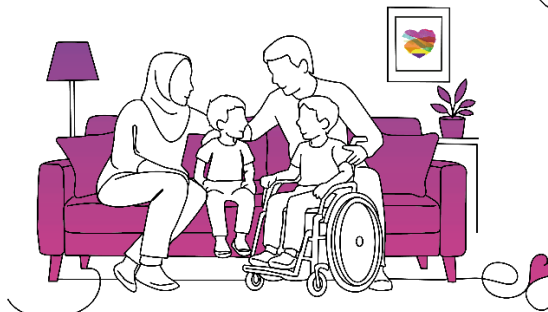
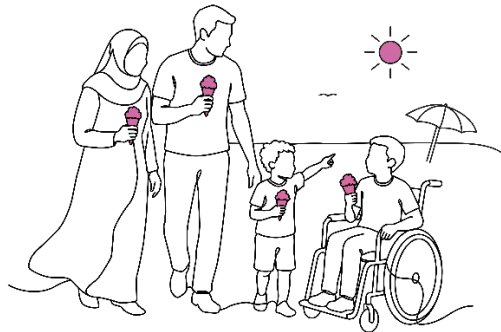
...providing grants and practical support to make day-to-day living easier and more enjoyable for the whole family



WE EMPOWER

...giving information, connections and skills to empower families so they can achieve their goals

...creating opportunities for families to have an input on the policies and services that shape their lives



WE EVIDENCE

...deeply rooting our work in and insight into families' lived experience. We create a more inclusive society, where families can realize their right to live well and thrive.

The situation

Families caring for disabled and seriously ill children face deep, persistent and systemic disadvantage. Their needs are complex and constantly changing, but suitable support is often limited, inconsistent and difficult to access. As a result, too many families experience financial strain, stress and isolation, and too many children miss out on learning and fun – opportunities that every child deserves.

Why we're here (our mission)

Family Fund's mission is to make life better for families raising disabled and seriously ill children. We do this by providing:

- Grants and practical support to make day-to-day living easier and more enjoyable
- Information, connections and skills to empower families, so they can achieve their goals
- Opportunities for families to have an input on the policies and services that shape their lives

The change we seek (our vision)

Our vision is for an inclusive society, where families raising disabled and seriously ill children have ready access to the support they need, and can realise their right to live well and thrive. We will know we have reached this destination when:

- Families with disabled and seriously ill children have long-term financial security, and are no longer pushed into hardship because of caring
- Disabled and seriously ill children, and their siblings, enjoy the same opportunities as children in non-disabled families, and can realize their full potential
- Support for families is tailored to their specific needs, and built on a deep understanding of lived experience

What we bring

- We empower. We believe families are best placed to decide what they need and when they need it, and we design our support with them, and for them. We have a unique bond of trust with families.
- We embrace. We take a whole family approach to support because the well-being of all family members is connected.
- We evidence. Our work is rooted in research and insight into families' lived experience.

What we achieve (outcomes)

Our Theory of Change sets out two types of outcomes. The measures in the column "that contribute to these changes" are included in Family Fund's outcomes framework and we gather data to assess our progress against these. We cannot measure everything, so these are a barometer of our contribution.

The "as a result" outcomes show the overall systemic changes we believe our work contributes to.

Assumptions

Context

- Families raising disabled or seriously ill children will continue to face systemic disadvantage, gaps in statutory provision and legislation
- Demand for support will remain high or increase due to economic pressures on both families and statutory services
- Government and statutory partners will not fill all gaps in provision, leaving a continued role for us as a non-statutory trusted ally

Engagement

- As a trusted organisation, families will be willing to share their stories to inform our research, advocacy, and influencing work.
- The support we offer will remain relevant to families' changing needs across the UK.

Delivery

- Demand will always outstrip available resources.
- It is possible to diversify income to limit over-reliance on government funding; we will be able to secure sufficient and diverse funding across the UK to sustain and ideally grow our offer.
- Staff will have the capacity to deliver at scale, while maintaining quality and responsiveness to a family's specific needs and concerns.
- The information and support we offer will complement and enhance existing sector offers.

Positioning and partnership

- We will maintain our distinctive position as a trusted, experienced, non-judgemental, and family-centred organisation.
- We can balance breadth of reach with depth of impact, avoiding dilution of mission.
- Expanding our reach will require clear positioning and a higher profile.
- We will expand and develop new and existing partnerships to maximise our income, delivery and influencing work.
- Partnerships with governments, funders and civil society will remain constructive and collaborative.
- Embedding this Theory of Change will help us to become more outcome-focused and resilient in a changing external environment.

Change pathways

- Meeting urgent needs creates the stability necessary for families to benefit from longer-term opportunities.
- Families will be enabled to participate in advocacy and influencing work, should they wish to take part.
- We will work effectively with families to evidence the changes needed in policy and society.
- Policymakers and funders will utilise our evidence and insights in their decision-making.

We do these things	That contribute to these changes	We measure progress by...	As a result...
Provide grants for day-to-day items (eg white goods, furniture, clothing)	<p>The financial pressure on families on a low income is reduced</p> <p>Families are able to choose the type of item that best meets their needs</p>	<p>Tracking number of day-to-day item grants issued and total £ granted</p> <p>Using evaluation surveys for grant recipients to measure changes in financial wellbeing and grant item satisfaction</p>	<p>Families are less financially disadvantaged</p> <p>The whole family (parents, carers, children and siblings) experience less day-to-day pressure</p> <p>Families are less likely to experience crisis</p>
Make grants in emergency situations	Families can meet daily needs	<p>Track number of emergency grants given and total £ granted</p> <p>Use evaluation surveys for grant recipients to measure changes in financial wellbeing</p>	<p>Families access support wherever they live in the UK</p> <p>Parent/carers feel less isolated</p>
Give information and support, including through the helpline, website and signposting.	<p>Parents/carers feel more confident in seeking support</p> <p>Parent/carers feel better connected to other available support</p>	<p>Use FCT feedback survey to measure confidence in seeking and securing further support</p> <p>Use FCT feedback survey to assess whether families feel better connected to other sources of support available to them</p>	

We do these things	That contribute to these changes	We measure progress by...	As a result...
Funding activities, shared experiences and breaks from caring	Parents, carers, children and siblings report improved wellbeing	Use evaluation surveys for grant recipients to measure changes in wellbeing for parents, carers, children and siblings before and after receiving funded activities, shared experiences and breaks from caring (using SWMWEBS and ONS4 - specific questions and audience will depend on the grant)	Families feel happier and more hopeful about and better prepared for the future
Digital tools and training	<p>Parents/carers gain new skills</p> <p>Parents/carers feel more confident in using essential services online</p> <p>Children access opportunities for online play, learning and socialising that they would not otherwise have</p>	<p>Use evaluation surveys to measure parent/carer changes in key digital skills before and after taking part in training sessions</p> <p>Use evaluation surveys to measure parent/carer changes in confidence in their role and decision-making before and after taking part in training sessions</p> <p>Use evaluation surveys to assess how likely participants would have been to access similar opportunities in the absence of our activities</p>	<p>Families feel their aspirations matter</p> <p>Parent/carers feel confident that they can adapt as circumstances change</p> <p>Children have opportunities to learn, develop and enjoy childhood</p>
New programmes (e.g. financial education)	Families build new skills, strengthen resilience and feel better prepared for life changes	Use evaluation surveys to measure improvements in relevant skillsets, personal resilience, and sense of preparedness for relevant life changes	

We do these things	That contribute to these changes	We measure progress by...	As a result...
Public affairs (including research, influencing, media)	<p>Key stakeholders understand families' needs</p> <p>Key stakeholders engage with Family Fund as a source of family insight</p>	<p>Annual survey of key stakeholders to measure understanding of family needs</p> <p>Opportunities to engage with families and tracking subsequent actions</p>	<p>Longer term, families will see:</p> <p>Local and national services and policy become more responsive and reflective of their experiences</p>
Put family voice is at the heart of Family Fund's work, including service development, and influencing activity	<p>Families feel listened to and valued by Family Fund</p> <p>Families feel the services provided reflect their needs and priorities</p>	<p>Customer service evaluation</p> <p>Use Annual Family Survey to assess the extent to which families feel our services reflect their needs and priorities</p>	<p>Society becoming more equitable for families raising disabled or seriously ill children</p>
Partnership and coalition working	Family Fund is recognised as a trusted partner	Monitoring number of partnership projects undertaken; annual survey of partner organisations to measure satisfaction and trust levels	
Amplifying families' experiences	<p>Families' voices feed into policy and practice decisions</p> <p>Parents/carers feel they play an active role in shaping the future their family needs</p>	<p>Monitoring number of activities delivered annually which involve feeding family voice into Government decision-making processes, and tracking subsequent changes to policy and practice</p> <p>Use Annual Family Survey to measure parent/carers sense of personal agency (using Pearlin Mastery Scale or adapted version)</p>	